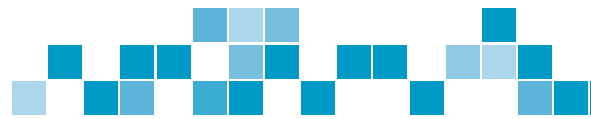




AquaRo² & EDI²

INNOVATIVE LABWATER SYSTEMS



The new pure water systems **AquaRo²**, **AquaRo² DI** and **EDI²** are reliable and compact systems which produce up to ASTM Type II grade water from 120 to 960 liter a day. All systems ensure high comfort at low operating costs.

The systems are equipped with a pretreatment of activated carbon and softening components. **AquaRo²** systems are equipped with a reverse osmosis (RO), **AquaRo² DI** with an additional mixed bed cartridge and **EDI²** with an additional electro deionization (EDI) cell to produce de-ionized water of Type II. The systems have a 10 l, 35 l, 70 l or an individual sized storage reservoir which are filled with a production rate of 5-40 l/h. The de-ionized water can be dispensed from the reservoir or optionally with a fixed and flexible dispenser. An UV lamp can be integrated optionally.

The new **AquaRo²** and **EDI²** models enable remote diagnosis. This Remote Check offers you the opportunity to save time and money by fast and reliable support through the service team.

RANGE OF STANDARD SYSTEMS

This product guide shows the range of our labwater systems and will help to select the best system for your needs.

Advantages of the new systems

- Compact housing
- Big touchscreen
- Remote Service module and self diagnosis
- interactive software
- traceable water quality values



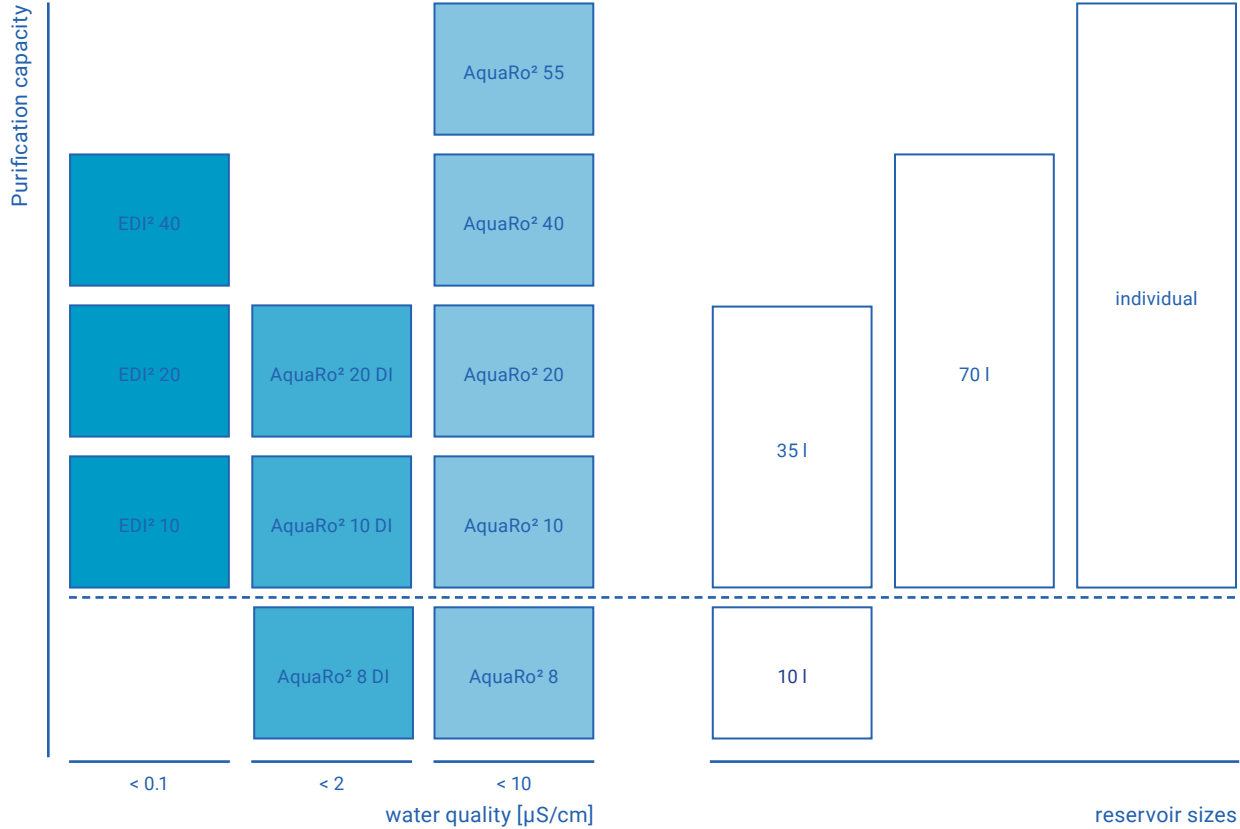
Typical specifications

	EDI²	AquaRo² DI	AquaRo²
Conductivity	< 0.1 $\mu\text{S}/\text{cm}$	< 2 $\mu\text{S}/\text{cm}^1$	< 10 $\mu\text{S}/\text{cm}^1$
TOC	< 20 ppb	< 50 ppb	< 50 ppb
Germ	< 10 KBE/ml	< 50 KBE/ml	< 50 KBE/ml

¹ depends on inlet water quality







OPTIONS

TOC monitoring

(only for EDI²)

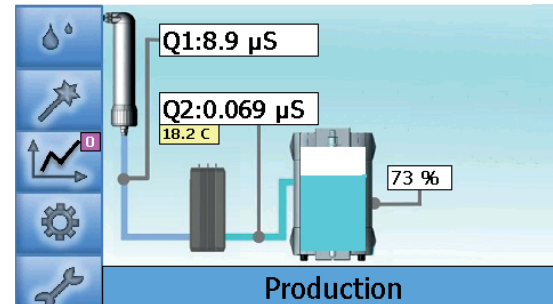
The TOC monitoring during production and intermittent measurements during non-use periods allows to check the organics in water continuously. The TOC value is measured between 1 and 999 ppb and can be shown in the display to monitor organic impurities.

UV lamp

For sensitive applications the systems can be equipped with an UV lamp.

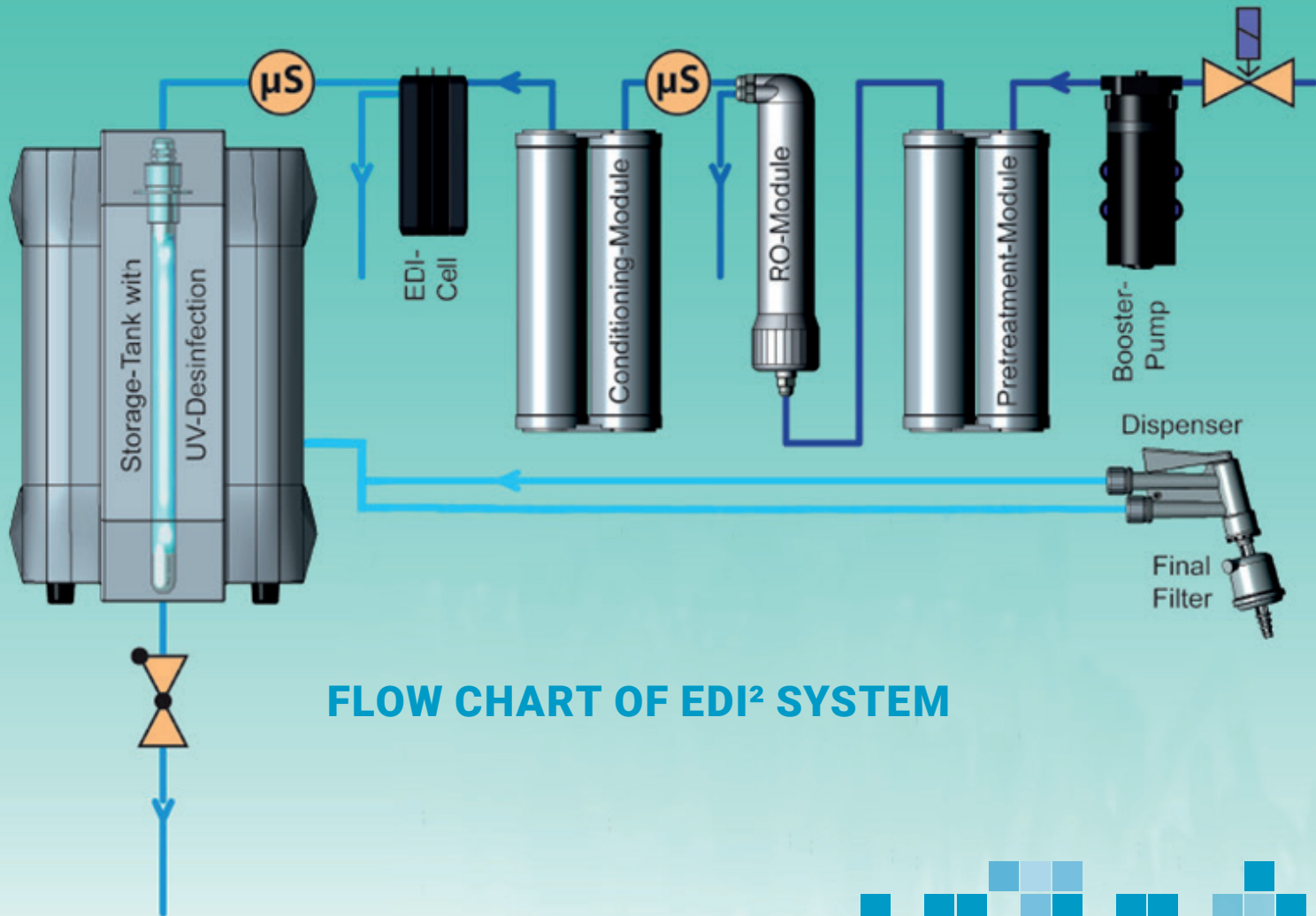
memTap

Our new automatic memTap allows the volumetric controlled tapping of water with a dispenser arm. The arm can be moved horizontally and vertically. Preset of tap-volume is in 0.1 l steps. This system prevents overflow of containers and allows to tap water without supervising. The 3.5" display with touch screen offers you all relevant data at a glance.



main screen





FLOW CHART OF EDI² SYSTEM





membraPure GmbH
Wolfgang-Kuentscher-Str. 14, 16761 Hennigsdorf/Berlin, Germany
+49 3302 - 201 20 0 info@membraPure.de www.membraPure.de